

**Give Me A
SAFE
BASEMENT!**



At SafeBasements we bring over 30 years of experience in the building and basement waterproofing industry. SafeBasements is dedicated to repairing common and often dangerous problems associated with excessive moisture. There are many waterproofing solutions as listed in the chart below. With SafeBasements you can be confident that you are getting the most complete and affordable solution to your basement problem.

“With moisture problems the best approach is almost always to remove or control the source of the moisture not to try to stop it at the last line of defense.”

University of Minnesota Extension

To read the study “An Overview of Solutions to Basement Moisture Problems” by the University of Minnesota go to:
www.extension.umn.edu/distribution/housingandclothing/components/7051-04.html

	SafeBasements Waterproofing	Drain Tile	WaterGuard (Above Footing Drainage)	Beaver
Drain water from walls	Yes	Yes	Yes	Yes
Lower water table below floor	Yes	Yes	No	No
No need for expensive High Capacity Dehumidifier	Yes	Yes	No	No
No need for drainage floor covering	Yes	Yes	No	No
Radon system compatible	Yes	No	No	No
Erosion control	Yes	No	Yes	Yes
Clog proof	Yes	No	Yes	No
Semi sealed system - improves indoor air quality	Yes	No	No	No



www.safebasementswaterproofing.com

Basement Waterproofing

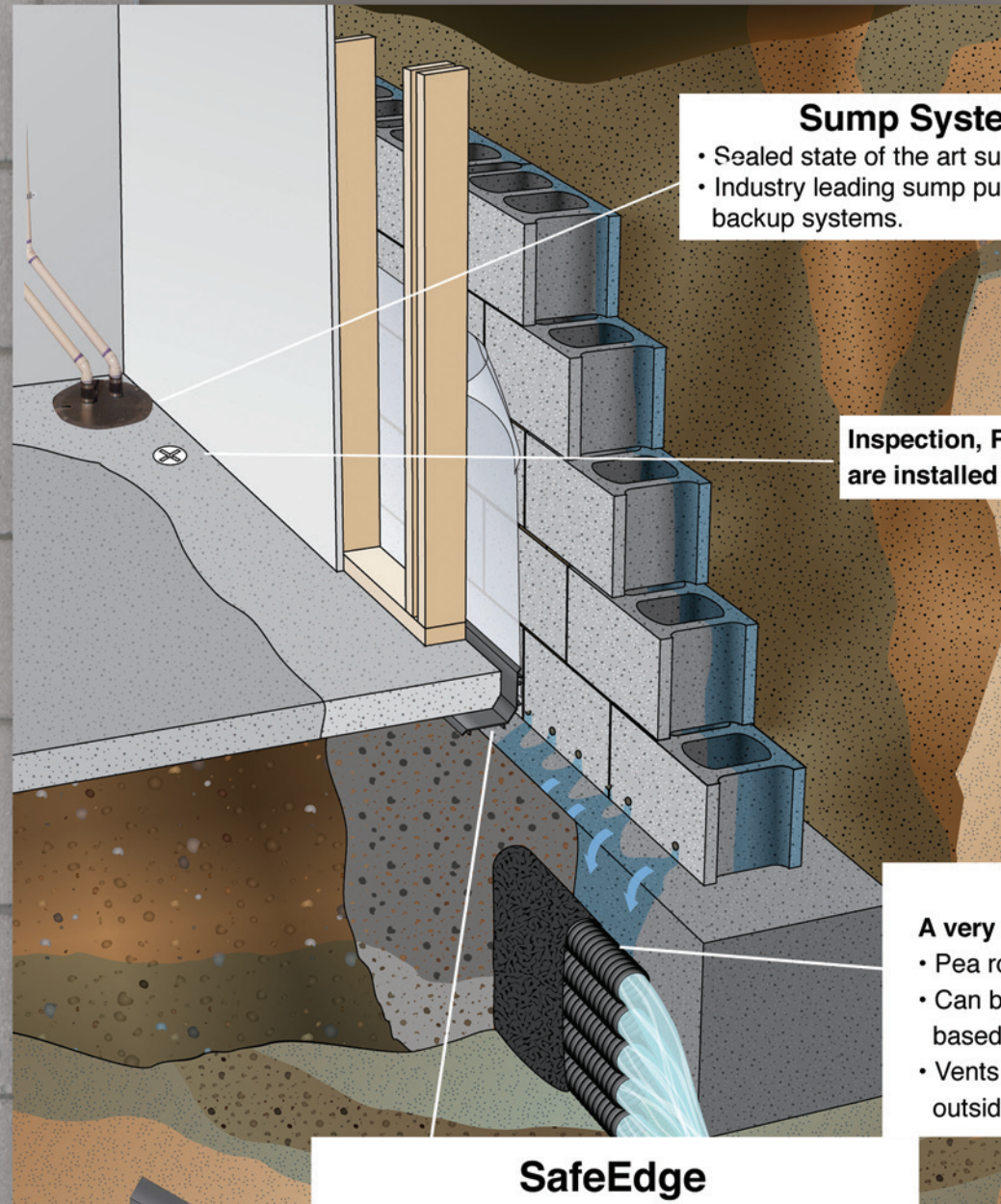
By:



Innovative
Effective
SAFE!

www.safebasementswaterproofing.com

Most interior drainage systems have all evolved from the drain tile system. Unfortunately for the homeowner most waterproofing contractors have gone to ease of installation rather than quality to the consumer. We at SafeBasements waterproofing have improved on the tried and true drain tile system, never compromising quality only improving the design with modern technology.



Sump Systems

- Sealed state of the art sump baskets.
- Industry leading sump pumps and backup systems.

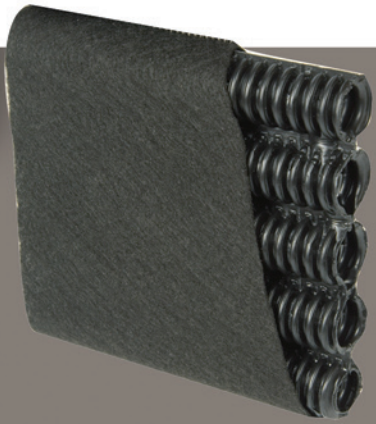


Inspection, Radon and moisture vapor ports are installed in every system



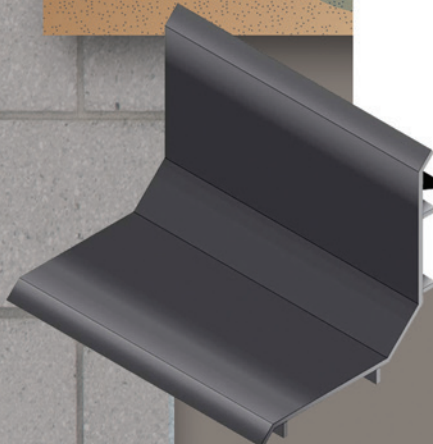
Multi-Flow Tile
A very efficient way to drain and dry soil.

- Pea rock backfill filters water
- Can be used with or without geotextile fabric based on soil types
- Vents radon to radon ports to be vented outside



SafeEdge

- Minimizes airflow between edge and wall
- Radon and moisture vapor seal
- Overflow protection
- Allows condensation from wall to drain into tile system
- Rubber tab holds vapor barrier in place



- 1 Plastic and clean drop cloths are used to cover any vents, flooring, furniture etc...
- 2 Concrete is removed from the perimeter of the home.
- 3 Soil in trench is removed to the depth of the footing.
- 4 Holes are drilled in each core and joint of the block at the base of the wall.
- 5 Drain tile is installed in the excavated trench.
- 6 Trench is filled with pea rock to the base of the floor height. SafeEdge is installed on top of rock along with moisture barrier.
- 7 The concrete floor is restored.



Photo shows optional 60 mil wall encapsulation product.



We at SafeBasements continue to develop and research all basement waterproofing products to gather and evaluate the best solutions for our customers. We strive to provide the finest service and quality possible.